



## 7 Westbourne Place , Farnham, GU9 8EF

A well presented 2 bedroom 2 bathroom purpose built first floor apartment with open plan living situated in a most convenient location close to local shops including a Tesco Express, bakery, butcher, hairdresser and off license. The apartment enjoys views to the rear, has a lift, parking and well tended communal grounds.

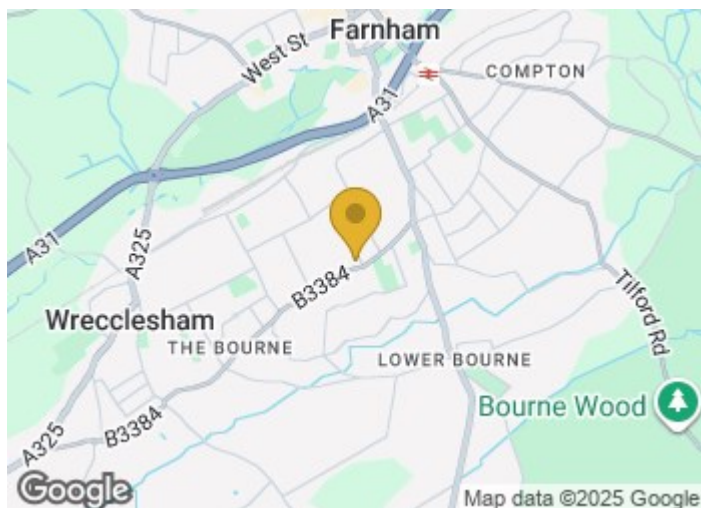
**Price Guide £375,000**

# 7 Westbourne Place

, Farnham, GU9 8EF



- First floor apartment with a LIFT
- Entrance hall with security entryphone system
- Bedroom 2
- Underfloor heating
- Good views towards Farnham town
- Double aspect open plan sitting/dining / kitchen with views
- Bathroom
- Level walk to local shops
- Bedroom 1 with en suite shower room
- Numbered parking space, visitors parking and well tended communal gardens



Directions

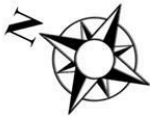
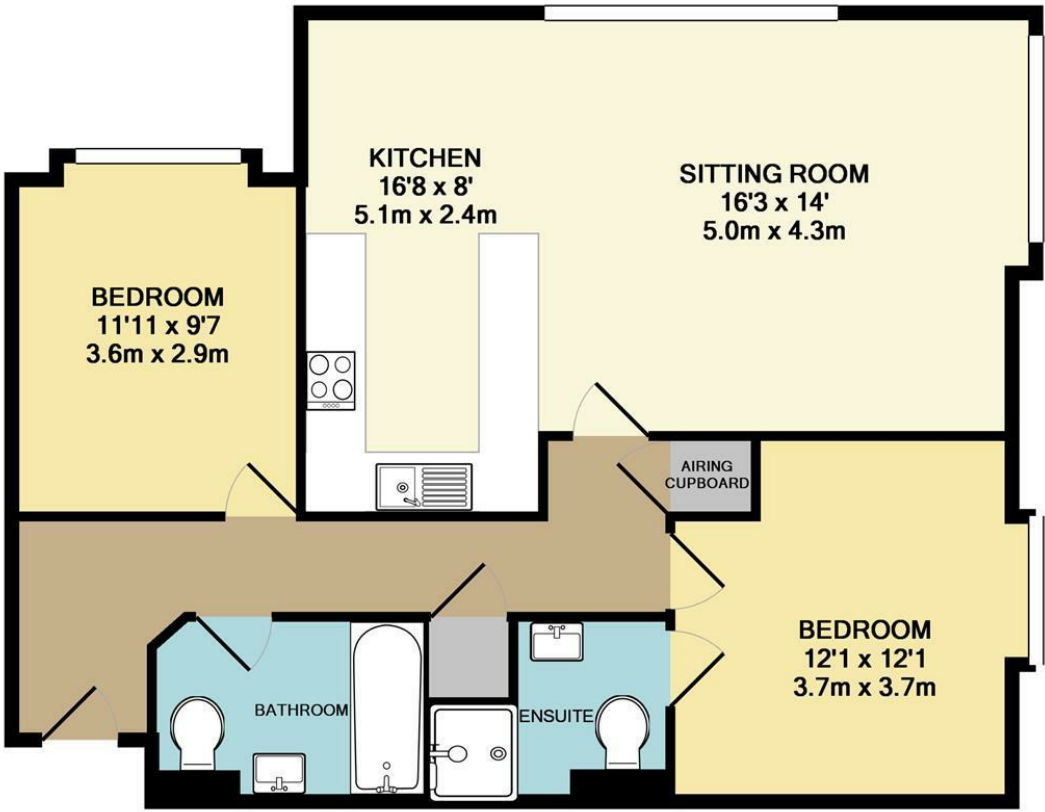








Floor Plan



TOTAL APPROX. FLOOR AREA 808 SQ.FT. (75.1 SQ.M.)

Whilst every attempt has been made to ensure the accuracy of the floor plan contained here, measurements of doors, windows, rooms and any other items are approximate and no responsibility is taken for any error, omission, or mis-statement. This plan is for illustrative purposes only and should be used as such by any prospective purchaser. The services, systems and appliances shown have not been tested and no guarantee as to their operability or efficiency can be given

Made with Metropix ©2017

These particulars, whilst believed to be accurate are set out as a general outline only for guidance and do not constitute any part of an offer or contract. Intending purchasers should not rely on them as statements of representation of fact, but must satisfy themselves by inspection or otherwise as to their accuracy. No person in this firms employment has the authority to make or give any representation or warranty in respect of the property.

